

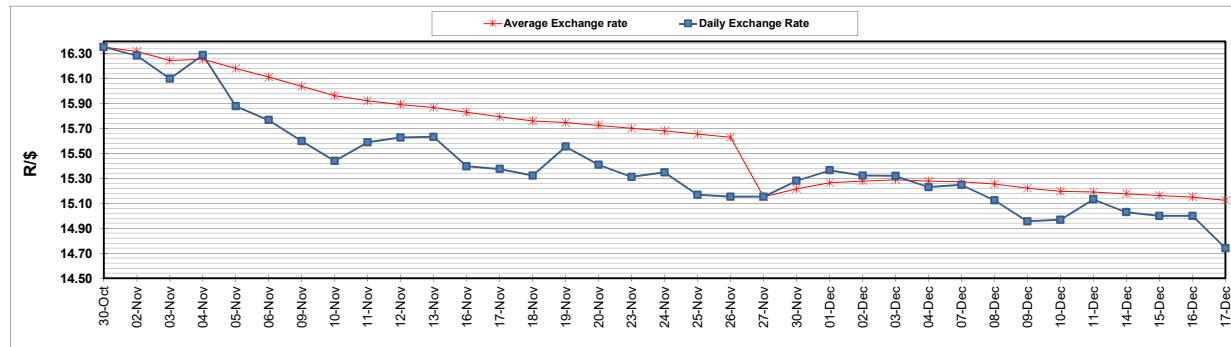
	PETROL 95 ULP	PETROL 93 ULP & LRP	DIESEL 0.05%	DIESEL 0.005%	ILL. PAR.
GAUTENG PUMP PRICE (SA c/l) AS FROM 02/12/2020	1,446.000	1,426.000	-	-	-
WHOLESALE PRICE (SA c/l) AS FROM 02/12/2020	-	-	1,245.420	1,247.820	684.688
SINGLE NATIONAL MAXIMUM RETAIL PRICE	-	-	-	-	856.000
BASIC FUEL PRICE - 17/12/2020 (SA c/l)	532.715	527.752	550.014	551.024	537.292
PRESS RELEASE CONTRIBUTION TO BFP 02/12/2020 - 17/12/2020 (SA c/l)	479.170	469.170	486.630	489.030	472.128
UNIT OVER/(UNDER) RECOVERY - 17/12/2020 (SA c/l)	(53.545)	(58.582)	(63.384)	(61.994)	(65.164)
AVERAGE BASIC FUEL PRICE 27/11/2020 - 17/12/2020	518.742	512.415	538.080	539.326	522.167
AVERAGE UNIT OVER/(UNDER) RECOVERY 27/11/2020 - 17/12/2020	(34.112)	(37.785)	(53.850)	(52.696)	(54.239)

ANALYSIS MOVEMENT OF AVERAGE OVER/(UNDER) RECOVERY

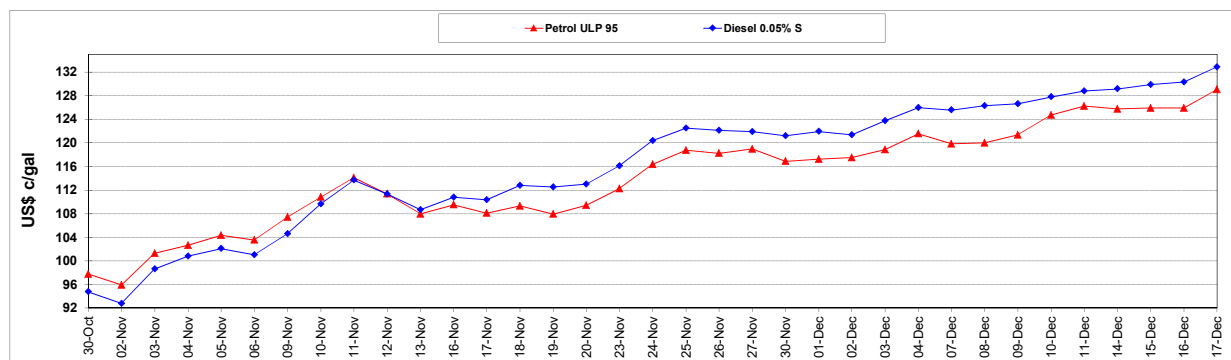
	PETROL 95	PETROL 93	DIESEL 0.05%	DIESEL 0.005%	ILL. PAR.
- MOVEMENT IN INTERNATIONAL PRODUCT PRICES	(51.453)	(54.914)	(71.837)	(70.725)	(71.694)
- MOVEMENT IN EXCHANGE RATE	17.341	17.129	17.987	18.029	17.455
AVERAGE UNIT OVER/(UNDER) RECOVERY 27/11/2020 - 17/12/2020	(34.112)	(37.785)	(53.850)	(52.696)	(54.239)

R/\$ EXCHANGE RATE - (R/\$14.7413 - 17/12/2020)

EXCHANGE RATE USED IN BASIC FUEL PRICE



INTERNATIONAL PRODUCT PRICES OF BASKET USED IN BASIC FUEL PRICE



BASIC FUEL PRICE IN SA CENTS PER LITRE

